



anglican
family
care

manaaki whānau

A photograph of a man in a grey t-shirt and a young child in a white t-shirt and patterned pants riding a pink bicycle in a park. The man is leaning over the child, holding the handlebars and the front of the bike to assist them. The background shows a grassy area and a fence.

**ANNUAL REPORT
2018-19**

CONTENTS

CHAIRPERSON'S REPORT	4
GENERAL MANAGER'S REPORT	6
YEAR HIGHLIGHTS	
RURAL TEAMS	7
FAMILY START	10
HOME-BASED FAMILY SUPPORT	11
SOCIAL WORKERS IN SCHOOLS	14
PLAY THERAPY SERVICE	15
COUNSELLING SERVICE	15
RESTORATIVE JUSTICE	16
CLIENT SURVEY RESULTS	17
THANK YOU!	18
INGOINGS AND OUTGOINGS	20
NOTES TO THE SUMMARY FINANCIAL STATEMENTS	21
SUMMARY FINANCIAL STATEMENTS	22
AUDITOR'S REPORT	23

ABOUT US

Anglican Family Care is a social services agency that has served the people of Dunedin and Otago since 1970. Our main office is based in Dunedin, with other branches in Balclutha, Oamaru and Alexandra.

Our main focus is children, young people and their families, but we also provide services that support individuals in need.

Our services are for all people regardless of their beliefs, and are delivered free-of-charge to our diverse client base. The majority of funding for our contracted services comes from Oranga Tamariki; Restorative Justice is funded by the Ministry of Justice. We fundraise for the remainder of our operating costs through our valued and generous network of donors, trusts and supporters.

OUR VISION

Strong, connected and thriving whānau and tamariki.

OUR MISSION

Working together with Otago whānau to make change that inspires hope for a better future.

BOARD OF TRUSTEES

Jim Hawker (Chairperson), Sian Adamson, Hilary Allison, Bishop Steven Benford, Elizabeth Cunningham (Bishop's Delegate), Kyle Forde, Diana Hudson, Jo Kingi, Bruce McCormick, Ruth Zeinert.

OUR VALUES

Whanaukataka (Sense of Family)

Our core values encompass all aspects of the family. We promote and generate respect for each other, and for those with whom we work.

Kotahitaka (Common Purpose)

We endeavour to enhance our work by building lasting relationships on a strong foundation.

Manaakitaka (Looking After People)

We honour our responsibility to be respectful, supportive and honest in our communications.

Mahi Tahī (Working Together)

We work together to create an environment in which diversity is acknowledged and nurtured.

Whakahirahira (Excellence)

We strive for the very best at all times with all people and seek to be professional in all situations.

Awhinataka (Stewardship)

We recognise that when we support others we are at all times acting for the whole agency and for all people.



OUR SERVICES

Family Start

Provides support, advocacy and information about health and safety to parents of babies and young children.

Home-Based Family Support

Provides support to parents; help and advice for child behaviour management; parenting courses; and respite care for families with children aged up to 16 years.

Restorative Justice

Helps the victims of crime reconcile with the perpetrators of crime.

Social Workers in Schools

In five Dunedin schools.

Counselling and Play Therapy

Therapeutic services to help children and parents deal with trauma, loss, attachment, abuse or grief.

CHAIRPERSON'S REPORT



It is my pleasure to present the forty seventh Annual Report of the Anglican Family Care Centre Incorporated Trust for 2018/2019.

The financial year ended 30 June 2019 recorded a net surplus of \$46,643, a very pleasing outcome which follows on from the surplus recorded last year. Total revenue was up 3.7% on last year driven predominately by increases to government contract funding. Total expenses were tightly managed at only 3.2% above last year. Employee costs, representing 78.9% of total expenses, were up on 2018 at 78.0% which was in part attributable to a general wage increase applied in the latter part of the financial year.

Income received for the year from fundraising, donations, grants and other income totalled \$394,495 (2018: \$378,109). We are always very grateful for the generous contributions received from our individual donors and especially thankful for the significant grants received from community organisations, in particular the Otago Community Trust, Central Lakes Trust, Lion Foundation, Working Together More Fund, Trinity Foundation, Leslie Groves, The Trusts

Community Foundation, NZ Lottery Grants Board, Tindall Foundation, and Dunedin City Council.

Late last year we welcomed three new trustees to the Board. Jo Kingi, Ruth Zeinert and Elisabeth Cunningham (Diocese representative) who have all made immediate contributions with each bringing a very diverse range of skills, expertise and experience. In late 2018 Mary-Ann McKibben resigned from the Board to head back home to the UK, I thank Mary-Ann for her valued contribution over the last four years. The other members of the Board are Bishop Steven Benford, Hilary Allison, Sian Adamson, Bruce McCormick, Diana Hudson, and Kyle Forde. I acknowledge and thank the insightful input of all trustees this year, in particular the efforts that went into the full and thorough review of the strategic plan which resulted in an influential set of Agency objectives.

In December Nicola Taylor retired as the Director of the Agency, a role Nicola occupied for the past 15 years. During this time Nicola worked through many significant challenges facing both the Agency and the NGO sector. Nicola successfully grew

the size and capability of the Agency implementing many important initiatives, new programs, restructures and very sound business practices. We are extremely grateful for the valuable contribution made by Nicola, characterised by her innovative thinking, strong networking skills, and brave and inspirational leadership. We wish Nicola all the very best in her retirement and future travels.

We are very fortunate to have appointed the highly capable Mike Williams to the role of General Manager. Mike was originally appointed as the Business Support Manager in mid-2018. Mike has been involved in the social services sector in Dunedin since 2001, firstly in community mental health before moving into NGO management. We welcome Mike into this vital leadership role, we know he will be very well supported by an experienced senior management team.

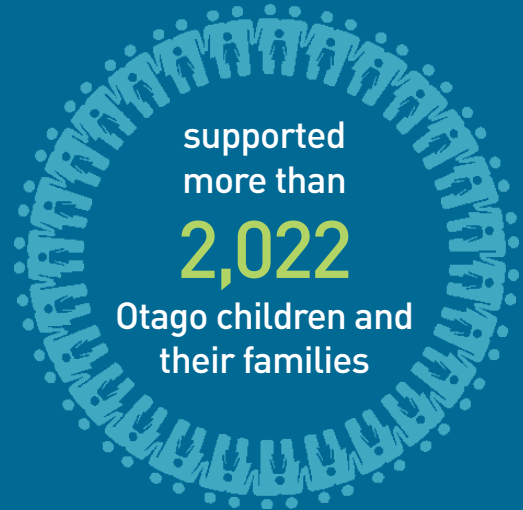
I would lastly like to acknowledge and thank the dedicated and talented staff of the Agency who utilise their skills and expertise to make important differences in the lives of those most vulnerable in our communities.

I move the adoption of the Chairperson's 2018/19 Report of the Anglican Family Care Centre Incorporated Trust.



Jim Hawker

From 1 July 2018 to 30 June 2019
Anglican Family Care...



GENERAL MANAGER'S REPORT



The previous 12 months have been a time of much change in personnel at Anglican Family Care. Most notably we farewelled our former Director, Nicola Taylor, after 15 years of service to the agency and I stepped up to the position of General Manager. Nicola's contribution in reshaping our organisation was substantial and cannot be overstated.

2019 has seen our staff give significant voice to a new Vision and Mission for the agency, which has been accompanied by a revitalised Strategic Plan for the 3 year period ahead.

The plan is focused on ensuring our vitality, relevance and sustainability into the future. There is much to be optimistic about. The pressure on our services across Otago remains high and our staff, volunteers and facilitators work with such passion, commitment and professionalism to meet the demand. Our people are, without doubt, our most valuable asset.

In terms of our relationships, we continue to build our connection with the Auckland based Anglican Trust for Women and Children. We have a mutually beneficial relationship with Pillars, who provide support to the children of imprisoned offenders and share office space with us in Dunedin. Our local connections within the Otago based social sector are also strong.

Financially we continue to operate within relatively tight margins. There has been much recent emphasis on fair funding and pay within the social services sector at a national level. This has been eased slightly very recently with increased government funding, which is very much welcomed. Our relationships with our contracting partners, and most importantly Oranga Tamariki, are positive. This is crucial as

Oranga Tamariki continues its overhaul of the care and protection system.

Our board of trustees continue to offer strong stewardship to Anglican Family Care, and I must thank our Chair Jim Hawker in particular for his support and guidance. We are fortunate to have the benefit of the board's collective insight and experience- they are staunch advocates of our work. We also value our relationship with the Anglican Diocese, and thank Bishop Steven Benford, the Diocesan office team and the parish communities for their continued support.

Finally I must acknowledge the wonderful support we receive from donors, trusts and supporters of Anglican Family Care. We are so very grateful for the generous backing the agency receives. It contributes to the often life changing work that we do in our communities.

The need is considerable, but together we are making a difference.

A handwritten signature in blue ink, appearing to read 'Mike Williams', written in a cursive style.

Mike Williams

YEAR HIGHLIGHTS

LONG SERVICE ACHIEVEMENTS

This year, we celebrate with Kathy Richards (Practice Manager) and Jackie Greenall (South Otago Social Worker) who have reached a milestone 25 years of working with Anglican Family Care. Ginnie Ravell also celebrates 10 years service to the agency.

NORTH OTAGO

Family Start in North Otago continues to thrive with a consistently full case load and waiting list. We have also been involved with "Laps not Apps" a joint initiative between Anglican Family Care, Oamaru Kindergarten Association and SKIP. The aim of this project is to ensure all children under the age of 5 have easy access to free children's books, to increase exposure to spoken language, build closer attachments with parents, increase early literacy and ultimately improve educational outcomes for these children. The community support has been overwhelming and has grown to be a much bigger project than we had anticipated. We now have boxes of free books at key locations throughout the district where parents are likely to be with their children including, cafes, pool, Plunket rooms, Work and Income, Mental Health and dental clinic. The next step is to have them at playgrounds, and Community Probation have offered to support this project by building the storage units at no cost to us, further increasing community involvement for this very worthwhile project.

OCEANS

OCEANS Grief and Loss Programme now offers facilitated groups for both children and adults and continues to be well supported in North Otago. This year we fare-welled Peggy Waite who established the OCEANS programme in Oamaru 3½ years ago and acknowledge the tremendous reputation that OCEANS has in the community and the positive benefits that have resulted for the children who have participated. Maria Johnston is the new Programme Co-ordinator and there are four new facilitators about to start their training.



21 CHILDREN **7** ADULTS
SUPPORTED THROUGH OUR
OCEANS PROGRAMME



SOUTH OTAGO

South Otago, our largest rural team with 7 staff (3 full time) continue to be actively supporting South Otago families to improve children's outcomes. This year we have looked at ways of enhancing the work that we do. We have now a counsellor providing individual counselling one day a week to parents and children who we are working with. We organised the Brainwave Trust to deliver a "Nurturing Your Tamariki" training session to a small group of parents who would not normally get to hear this information. We have started building a library of books to share with our families to build literacy and foster better child-parent relationships with a donation from Balclutha Inner Wheel.

87%

OF CLIENTS IN SOUTH OTAGO
HOME]BASED SUPPORT SERVICE
ACHIEVED THEIR GOALS

21

FAMILIES RECEIVED HELP AROUND FAMILY
VIOLENCE. **100%** OF THESE REPORTED MORE
AWARENESS OF THE IMPACT OF FAMILY VIOLENCE.

CENTRAL OTAGO/QUEENSTOWN LAKES

Anglican Family Care has four staff who cover the Central Otago/Queenstown Lakes area. In the past year we have continued to promote the Family Start and Home-based services across this region by creating new relationships with other services/referrers which has resulted in a steady number of referrals and subsequent delivery of support to families with children. These families are trying to manage stressors that may be impacting on their ability to parent their children in the best way they can.

The Parishes across the area have come forward to engage with, and support us, in several ways; beautiful knitted garments for babies and children for winter, play mats for our new babies and donations of new books for families. One of our priorities is to promote reading to children and love of books, not only to build language development but also to consolidate attachments and share quality time with parents and caregivers. This type of community development allows for a wider circle of support to be around families.

YEAR HIGHLIGHTS

FAMILY START

This year sees Family Start celebrate 20 years delivering its intensive home visiting programme to whānau across Aotearoa. Anglican Family Care has been delivering this service for 19 years to whānau in Dunedin. In recent years we have expanded into North, South and Central Otago. This year a collective of Family Start providers across New Zealand organised and held the first Family Start Conference. The focus of the conference was to provide staff with professional development and training, while also celebrating 20 years of success.

303

FAMILIES UNDERTOOK THE FAMILY START PROGRAMME OVER THE LAST YEAR

With the support of Anglican Trust for Women and Children, 10 of our staff were able to attend the conference. Whānau workers were able to participate in workshops and hear from some high calibre speakers. Keynote speakers highlighted how Family Start is an intensive programme and the benefits for Whānau. They spoke of the reality that whānau in Aotearoa live in, and the need for communities to support each other, and that with the right support not only foster children but all children can thrive; we can break that intergenerational cycle. It was humbling to listen to those powerful speakers who believed in the work we do.



YEAR HIGHLIGHTS

HOME]BASED FAMILY SUPPORT

Our Home-based Family Support programme involves working with parents/caregivers who want to develop and strengthen their parenting skills and confidence so that their children are able to reach their full potential.

CIRCLE OF SECURITY: MEGAN'S STORY

Circle of Security is a Parenting Programme that focuses on the connection between the child and parent/caregiver and helps to strengthen the relationship. We asked one of our clients to share their experience about the programme with us.

Megan is a solo mum to three daughters aged 14, 12 and 8 all with varying high health needs and had been attending counselling with her middle daughter who had ongoing severe anxiety and depression. Towards the end of their sessions, it was identified that their home environment was highly stressful, which was having an effect on everyone, including Megan, who had developed depression. "I often felt overwhelmed, lost and helpless" Megan explains. "Due to my children's health needs, I had resolved that my role as a Mum was always going to be hard and I was never going to have the happy positive household I had envisaged". The counsellor felt that some further support was required and made the referral to AFC.

Megan recalls having little knowledge of AFC and the services the agency offered, "I was actually anxious to have people come into my home for fear of being critiqued. I was blown away by how there was no judgement at all. My Social Worker Steph made me feel understood from the get-go. I had thought because I have children with severe

anxiety, there would be no mainstream approach to help me raise them. Steph and I discussed options that may benefit us as a family, and from there I agreed to try The Circle of Security programme".

Social Worker, Steph, explains that the programme is based on attachment theory, focusing on the relationship and understanding that a child's behaviour is a message that children use to try and communicate to us what they need. "It's fundamentally different from a behavioural approach because it focuses on the relationship between the child and parent. The Circle of Security encourages us to look at what is behind the behaviour and ask why the child is acting this way. I see the relationship as the basket, if there are holes in a basket then behavioural strategies are going to fall through those holes. The relationships need to be strong first. Often what we find is when children are securely attached and are having their emotional needs met, there are fewer behavioural issues."

Megan reflects on the whole experience as being very positive. "Having Steph come to my home every week and allowing me to discuss the trials and tribulations of being a mum, without judgement had a huge impact on me, I no longer feel lost or hopeless".

As a reflection-based programme, it can be quite challenging. It's delivered over 8 sessions, through video clips that cover interactions between children and caregivers that are designed to help parents relate to their own parenting experiences, providing them with the opportunity to reflect and learn.

"I would visit Megan each week to help with reflection, talk

about the interactions that had occurred and where that sat on the Circle. Being bigger, stronger, wiser and kind, is a tool used to demonstrate how to comfort and protect a child's independence so that you can enjoy and support them". said Steph.

"Steph's approach was always so positive and helped reinforce that you actually don't have to be a 'perfect' Mum. The Circle of Security taught me how to repair your relationship when you drop off the Circle and helped me to recognise that my daughters don't take me for granted. Every week we had handouts that I have kept, so when the time comes that I need a refresher, I have the material to help get me back on track".

"It's rewarding now when people notice a change in my attitude and approach, in fact, even my children have noticed the change in my parenting style and have commented on

how much more present and engaged I am. What fascinated me was how using the Circle applies to not just you as a parent, but other relationships with family and friends. With two of my children being older, I assumed it was too late to change the dynamics of our relationships, but the Circle programme showed me you can start making connections at any point. After a few weeks, my default responses to situations had changed. A good example of this would be when my teen comes into my bedroom at the end of the night and sits on my bed. Sometimes she will talk and want to share what has happened in her day, other times she might watch TV with

“ I HAVE BEEN QUITE VOCAL THROUGHOUT MY SUPPORT NETWORKS ABOUT THE POSITIVE DIFFERENCE THAT AFC HAS MADE. 🙌🙌

me. Previously, I would tell her to go back to bed or question why she couldn't tell me this stuff earlier in the day, however, now I see the behaviour as her seeking a connection and I understand the impact of taking that opportunity, as small as it is".

"I have been quite vocal throughout my support networks about the positive difference that AFC has made. I have never felt judged and I formed a bond so easily with my Social Worker as she was realistic and honest. I constantly tell people about the Circle of Security and how at any stage if the system wasn't working, I could reassess and look at other options. Aside of the Circle Programme. Steph was able to

help advocate for me with several organisations, having the backing of a professional helped me feel less helpless and that I am not battling for entitlements on my own".

This programme is based on decades of research, and since January this year Steph has worked with 9 families. If you would like to learn more about this programme we recommend reading 'Raising a Secure Child', by Kent Hoffman, Glen Cooper and Bert Powell and is available at Dunedin Public Library or visit:

www.circleofsecurityinternational.com

“ IT’S REWARDING NOW
WHEN PEOPLE NOTICE A
CHANGE IN MY ATTITUDE
AND APPROACH, IN FACT,
EVEN MY CHILDREN HAVE
NOTICED THE CHANGE IN
MY PARENTING STYLE AND
HAVE COMMENTED ON HOW
MUCH MORE PRESENT AND
ENGAGED I AM. ”



YEAR HIGHLIGHTS

SOCIAL WORKERS IN SCHOOLS

This was an exciting year for SWiS programme development with the addition of two new innovative and collaborative programmes.

Katie Baumler (SWiS) and Lynda Davidson (Home-based Family Support) co-developed and facilitated PAWS (Positive Animals with Students) with three Y 1 and 2 students at one of Katie's schools. The programme is designed to support young people with developing empathy and self-regulation skills through positive interactions with animals. The students loved this programme, which ran for four sessions



and included a visit to school from a puppy to learn safe ways of interacting with dogs; a trip to visit the veterinarian and animals at the SPCA; a horseback riding experience at the Riding for Disabled (RDA) in Waikouati; and a picnic at the Botanic Garden aviary. Katie and Lynda are thrilled with the outcomes of this programme and look forward to running it again this year.

Katie also developed a collaborative programme with Stepping Stones (Family Works Otago), a drop-in centre for adults in the South Dunedin community. The facility is located very near to Bathgate Park School and seemed an excellent partnership to provide real world experiences and life skills for young people. The programme, MakerSpace, involved two Year 8 students working with a Stepping Stones employee and volunteer at the facility's workshop over 10 weeks to design and build a lost property box for the school. Once this project was finished, the boys also supported the volunteer with repairing a gate for an elderly member of the community and finished up with a personal project - one of the boys renovated his skateboard and the other created a shield from wood. All parties involved with this programme thoroughly enjoyed the process and outcomes. In addition to this programme, Stepping Stones also invited Katie and four Year 8 girls to partner with a ladies group who sew tote bags for the op shop every Friday. The girls spent a morning with the group and each came away with a beautiful and unique tote bag. For most of them, it was the first time they had ever used a sewing machine and they are still talking about the experience. Katie looks forward to continuing this partnership and offering similar opportunities to youth across her schools.

YEAR HIGHLIGHTS

PLAY THERAPY SERVICE

We have been offering Play Therapy since 2015. It is a therapeutic approach where the child, through the therapeutic relationship and within the context of play can safely begin to explore complex issues within their lives, such as trauma, grief, separation and emotional regulation.

“PLAY THERAPY HAS BEEN GREAT FOR MY CHILD, I SEE HER USING STRATEGIES SHE HAS LEARNED IN THE PLAY ROOM OUT IN THE REAL WORLD THAT HELP HER COPE AND GROW IN LIFE.”

In the last year, 25 Otago families have had play therapy.

COUNSELLING SERVICE

As well as Play Therapy, we also offer counselling to parents to address past or present issues that may be impacting on the well-being of their children and family. This year, we worked with 77 counselling clients and 95.5% of clients engaged in counselling achieved a reliable or clinically significant change.



YEAR HIGHLIGHTS

RESTORATIVE JUSTICE

We are the only provider of Restorative Justice in Otago, and the service covers the Dunedin and Alexandra courts. This community-based justice programme offers victims of a crime an opportunity to participate in a process to address the harm done. All referrals are received through the Justice system and taking part is voluntary. The victim and perpetrator are invited to meet together with trained facilitators to discuss what happened and what can realistically be done by the offender to put things right. We have a very skilled and experienced Restorative Justice team who achieve great outcomes for victims and the community.

513 REFERRALS

244 PRECONFERENCE MEETINGS

94 CONFERENCES



YEAR HIGHLIGHTS

CLIENT SURVEY RESULTS

Client satisfaction is very important to us and we regularly monitor client perception of how supported they feel and how their progress towards their goals is going.

Clients complete an anonymous survey via Survey Monkey when they exit our service, and this is what some of our clients said...

“THEY HELPED ME UNDERSTAND MY DAUGHTER AND HOW TO OVERCOME THE CHALLENGES WE HAVE BOTH BEEN THROUGH. ”

“MY FAMILY START WORKER WAS SO UNDERSTANDING AND LOVELY I LOOKED FORWARD TO MEETING WITH HER EVERY WEEK, I ALSO FELT LIKE I COULD TALK TO HER ABOUT ANYTHING. ”

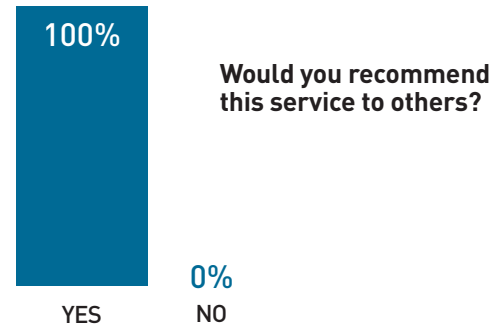
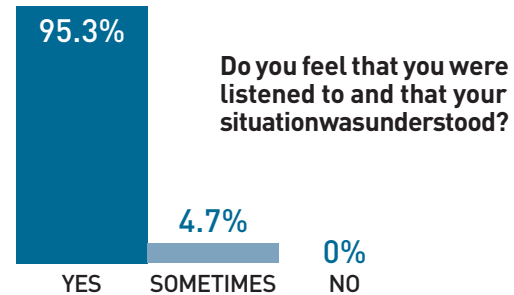
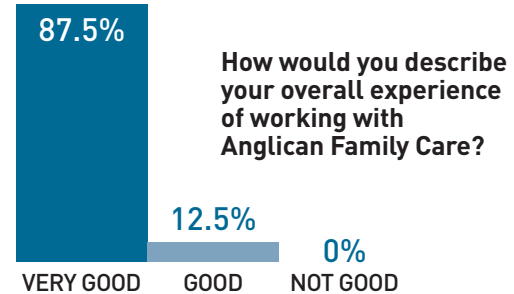
“THE APPOINTMENTS WERE VERY GOOD, HELPING US AND GIVING US IDEAS ON MY CHILD’S DEVELOPMENT WERE VERY HELPFUL. ”

“ENCOURAGING AND GAVE HELPFUL ADVICE ON THINGS THAT I WAS STRUGGLING WITH. ”

“SOMEONE TO TALK TO, THAT DOESN'T JUDGE & ARE VERY SUPPORTIVE. ”

“SHARING IS CARING. THEY ARE FRIENDLY AND GIVE SUPPORT FOR OUR FAMILY. ”

“HAVING THE INFORMATION AND TALKING TO SOMEONE THAT UNDERSTANDS. ”



THANK YOU!

Over the last twelve months, we have embraced new fundraising opportunities:

- In September, we held a successful Spring Clothes sale at St John's Roslyn.
- In November, we ran our first street appeal in Dunedin. Despite the cold weather on the day we raised the agency profile and have developed a footprint to make this an annual event.

Without the generosity of our volunteers, referrers and all of our supporters, the work we so passionately do would not be possible. This includes 166 individuals and families who have donated to us during the past year. Thank you, your support is invaluable.

ACE Shacklock Charitable Trust

Anglican Diocese of Dunedin

Audit Professionals

Balmacewen Lions Group

Carbase

Central Lakes Trust

COGS

Donald & Nellye Malcolm Charitable

Trust

Dunedin City Council

Dunstan Anglican Parish

Eftpos Specialists

Findex Community Fund

Friends of Relationship Services

Friendship Group

Graham and Olive West Charitable

Trust

Inner Wheel Balclutha

Kelso Trust

Leslie Groves Hospital

Lion Foundation

McAuley Trust

Mercy Hospital

New Zealand Federation of Graduate

Women

NZ Lottery Grants Board

Only Good

Otago Community Trust

Otago Orthodontics

Paper Plus Wanaka

Parishes of the Anglican Diocese of

Dunedin

Pub Charity Limited

Quilters & Patchworkers of Otago

Ray White Realty

Ross Dowling Marquet & Griffin

Rotary Club Dunedin North

Rotary Club of Dunedin

Simply Flowers & Events

SpeedPrint

St Andrew Street Church of Christ

St Hilda's Collegiate School

St John's Roslyn AAW

St Luke's Oamaru A A W

St Paul's Cathedral Parish Life Group

The Religious Society of Friends

The Southern Trust

The Trusts Community Foundation

The Wardrobe

Tindall Foundation

Trinity Foundation Ltd

Waitaki District Council

Zonta Dunedin Metropolitan Club



1. Sing Out choir from St Clair School at our music concert last year. **2.** Our wonderful volunteers from our street appeal in November. **3.** A child from North Otago enjoys reading her books donated via "Laps not Apps" initiative. **4.** Wee Nyxzin was super happy with the gift of his warm jumper and hat. Teddy will be well-loved. **5.** Shoppers enjoy browsing through the items at our Spring Clothes sale in September.

INGOINGS AND OUTGOINGS

1 July 2018 to 30 June 2019

INCOME

Total contract funding \$2,631,582

Non-contract income

Donations \$72,984

Grant income \$192,104

Interest received \$87,952

Other income \$41,455

Total \$394,495

Parent body grants

Anglican Diocese of Dunedin \$50,924

Total \$50,924

Total income \$3,077,001

OPERATING EXPENSES

Administration, interest and professional fees \$158,016

ICT \$84,670

Occupancy \$177,977

Specific department expenses \$105,111

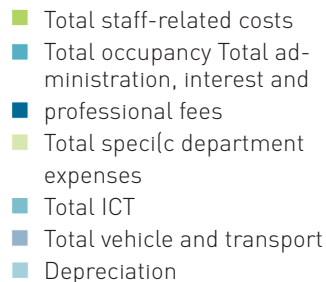
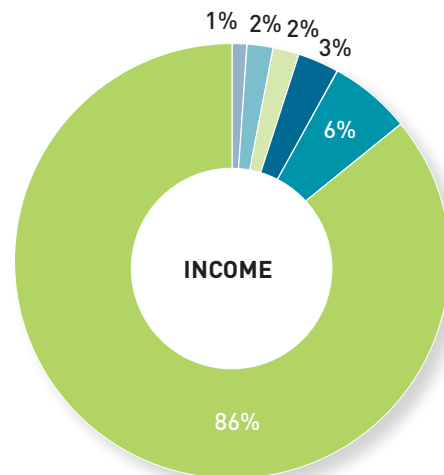
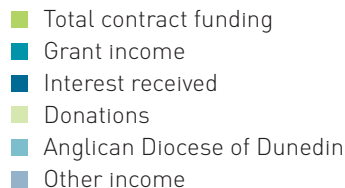
Staff related costs \$2,389,679

Vehicles and transport \$75,312

Depreciation 39,593

Total expenses \$3,030,358

Net surplus \$46,643



NOTES TO THE SUMMARY FINANCIAL STATEMENTS

For the year ended 30 June 2019

These are the summary financial statements of Anglican Family Care Centre (the "Trust") for the year ended 30 June 2019.

The specific disclosures included in these summary financial statements have been extracted from the full annual financial statements dated 28 August 2019.

The full annual financial statements were approved for issue by the Trustees on 28 August 2019 and have been prepared in accordance with Tier 2 Not-For-Profit Public Benefit Entity (PBE) Financial Reporting Standards as issued by the New Zealand External Reporting Board (XRB). They comply with New Zealand Equivalents to International Public Sector Accounting Standards Reduced Disclosure Regime (NZ IPSAS with RDR) and other applicable Financial Reporting Standards

as appropriate to Public Benefit Entities. A modified audit opinion has been received on the full financial statements for the year ended 30 June 2019. The modification is a qualification that is common with other entities of a similar nature, where control over donations, fundraising and other similar revenue prior to being banked is limited. A copy of the full Trust financial statements for the year ended 30 June 2019 may be obtained by contacting the Trust on (03) 4770801.

This summary financial report cannot be expected to provide as complete an understanding as provided by the full financial statements of the Trust. This summary financial report has been examined by our auditor for consistency with the full financial statements. An unqualified audit opinion has been received. These summary financial statements were approved for issue by the Trustees on 18 September 2019.

Basis of preparation

Anglican Family Care Centre is a public benefit entity and was incorporated as a Charitable Trust in accordance with the provisions of the Community Trusts Act 1957. These are the summary financial statements of Anglican Family Care Centre and they comply with PBE FRS 43: Summary Financial Statements. The presentation currency is New Zealand dollars, rounded to the nearest thousand dollars. The full financial statements upon which these Summary Financial Statements are based, have been prepared to comply with the Accounting Standards Framework for Public Benefit Entities and the Financial Reporting Act 2013.

Specific accounting policies

All specific accounting policies have been applied on the same basis as those used in the full financial statements of the Trust.

SUMMARY FINANCIAL STATEMENTS

SUMMARY STATEMENT OF COMPREHENSIVE

REVENUE AND EXPENSE

For the year ended 30 June 2019	2019 (\$000's)	2018 (\$000's)
Revenue	3,074	2,964
Expenditure	3,030	2,935
Surplus	44	29
Other gains/(losses)	3	2
Total comprehensive revenue and expenses	47	31

SUMMARY STATEMENT OF CHANGES IN TRUST FUNDS

For the year ended 30 June 2019	2019 (\$000's)	2018 (\$000's)
Total trust funds at the beginning of year	1,182	1,151
Plus total comprehensive revenue and expenses for the year	47	31
Total trust funds at the end of the year	1,229	1,182

SUMMARY STATEMENT OF FINANCIAL POSITION

As at 30 June 2019	2019 (\$000's)	2018 (\$000's)
Assets		
Cash and cash equivalents	268	404
Other current assets	582	478
Total current assets	850	882
Other investments		
Property, plant and equipment	109	120
Other non-current assets	724	636
Total non-current assets	833	756
Total assets	1,683	1,638

	2019 (\$000's)	2018 (\$000's)
Liabilities		
Trade and other payables	454	456
Total current liabilities	454	456
Total liabilities	454	456
Net assets	1,229	1,182

Approved on behalf of the Trustees


Chairperson

Date: 28 August 2019


Trustee

Date: 28 August 2019

SUMMARY STATEMENT OF CASH FLOWS

For the year ended 30 June 2019	2019 (\$000's)	2018 (\$000's)
Net cash to operating activities	(5)	188
Net cash to investing activities	(131)	(119)
Net (decrease)/increase in cash and cash equivalents	(136)	69
Cash and cash equivalents at beginning of year	404	335
Cash and cash equivalents at end of year	268	404

Report of the Independent Auditor on the Summary Financial Statements to the Trustees of Anglican Family Care Centre Incorporated

Our Opinion

The summary financial statements, which comprise the summary statement of financial position as at 30 June 2019, the summary statement of comprehensive revenue and expense, summary statement of changes in trust funds and summary statement of cash flows for the year then ended, and related notes, are derived from the audited financial statements of Anglican Family Care Centre Incorporated for the year ended 30 June 2019. In our opinion, the accompanying summary financial statements are consistent, in all material respects, with the audited financial statements, on the basis described in the notes to the summary financial statements.

Summary Financial Statements

The summary financial statements do not contain all the disclosures required for the full financial statements. Reading the summary financial statements and the auditor's report thereon, therefore, is not a substitute for reading the audited financial statements and the auditor's report thereon.

The Audited Financial Statements and Our Report Thereon

We expressed a modified audit opinion on the audited financial statements in our report dated 28 August 2019.



Chartered Accountants
18 September 2019

Trustees' Responsibilities for the Summary Financial Statements

The Trustees are responsible for the preparation and presentation of the summary financial statements in accordance with PBE FRS-43: Summary Financial Statements.

Auditors' Responsibility

Our responsibility is to express an opinion on whether the summary financial statements are consistent, in all material respects, with the audited financial statements based on our procedures, which were conducted in accordance with International Standard on Auditing (New Zealand) (ISA (NZ)) 840 (Revised), *Engagements to Report on Summary Financial Statements*.

Other than in our capacity as auditor we have no relationship with, or interest in, Anglican Family Care Centre Incorporated.

Restriction on Distribution or Use

This report is made solely to the Trustees as a body. Our audit work has been undertaken so that we might state to them those matters which we are required to state to them in an audit report and for no other purpose. To the fullest extent permitted by law, we do not accept or assume responsibility to anyone other than the Trustees, as a body, for this report, or for the opinions we have formed.

Dunedin



Anglican Family Care
266 Hanover St, Dunedin, 9016
0800 FAM CARE | 0800 326 2273
www.anglicanfamilycare.org.nz
Charity Commission Number: 24152